



**ALASKA DIVISION OF HOMELAND SECURITY &
EMERGENCY MANAGEMENT**

SITUATION REPORT 20-350 • DEC 15, 2020



Toll-Free 1.800.478.2337

Anchorage Area 907.428.7000

SEOC 907.428.7100

<p><u>SEOC Preparedness Level</u></p> <p>Level 3 - Ongoing Active Response - 2020 December Southeast Storm</p>	<p>http://ready.alaska.gov</p>	<p><u>National Terrorism Advisory System:</u></p> <p>View this site for the latest NTAS bulletin: read the current NTAS Bulletin here.</p>
<p><u>Maritime Security (MARSEC)</u></p> <p>Level:1-Minimum Appropriate Security Measures</p>	<p>WHO Novel Coronavirus Pandemic (COVID-19):</p> <p>2019 Novel Coronavirus</p>	<p><u>Alaska Military Installation Force Protection Level:</u> FPCON Bravo</p>

(Significant changes from previous situation reports are in red.)

THREAT LEVEL CHANGES:

Significant Issues:

2020 December Southeast Storm Disaster:

SEOC remains at Level 3 and is actively engaged in response and initiation of recovery operations to Southeast Alaska communities impacted by the recent storm.

Haines:

Haines Borough Emergency Operations Center (EOC) is conducting a full incident planning process with regularly scheduled operational periods and situation report products.

Deployed State Division Supervisor is fully integrated with Borough EOC and Mass Care operations.

The area south of Beach Road landslide continues to be unsafe for re-occupancy and evacuated, complicating home access for residences in the hazard area and resumption of the search for the missing. Additional detailed geotechnical assessment may be required to determine safety.

Survivors continue to be sheltered in non-congregate shelters with disaster feeding and other mass care support.

Other Southeast Alaska Communities:

SEOC is in contact with the communities of Gustavus, Wrangell, Skagway, Juneau, Tanakee Springs, Hoonah, Hyder, and Petersburg reporting some storm damage and is coordinating resources requests and technical assistance.

Coronavirus (COVID-19) Pandemic:

A unified command has been established at the SEOC. The SEOC continues to support statewide response to COVID-19.

State of Alaska Department of Health and Social Services (DHSS)

DHSS is operating as the Medical Branch under the State EOC/Unified Command.

For more information about the outbreak refer to:

<https://covid19.alaska.gov/>

<https://www.cdc.gov/coronavirus/2019-ncov/index.html>

The Alaska DHSS website is located at <http://dhss.alaska.gov/Pages/default.aspx>

NTAS BULLETIN

To read current advisories, select the link below.

<https://www.dhs.gov/national-terrorism-advisory-system>

Travel Alerts and Conditions

COVID-19 Health Orders may affect travel. Check <https://covid19.alaska.gov/> for current Health Orders.

For current driving conditions dial 511 or link to <http://511.alaska.gov/>

Recent Earthquakes

USGS Earthquake Information: <http://earthquake.usgs.gov/>

National Tsunami Warning Center: <http://ntwc.arh.noaa.gov/>

Alaska Volcanoes

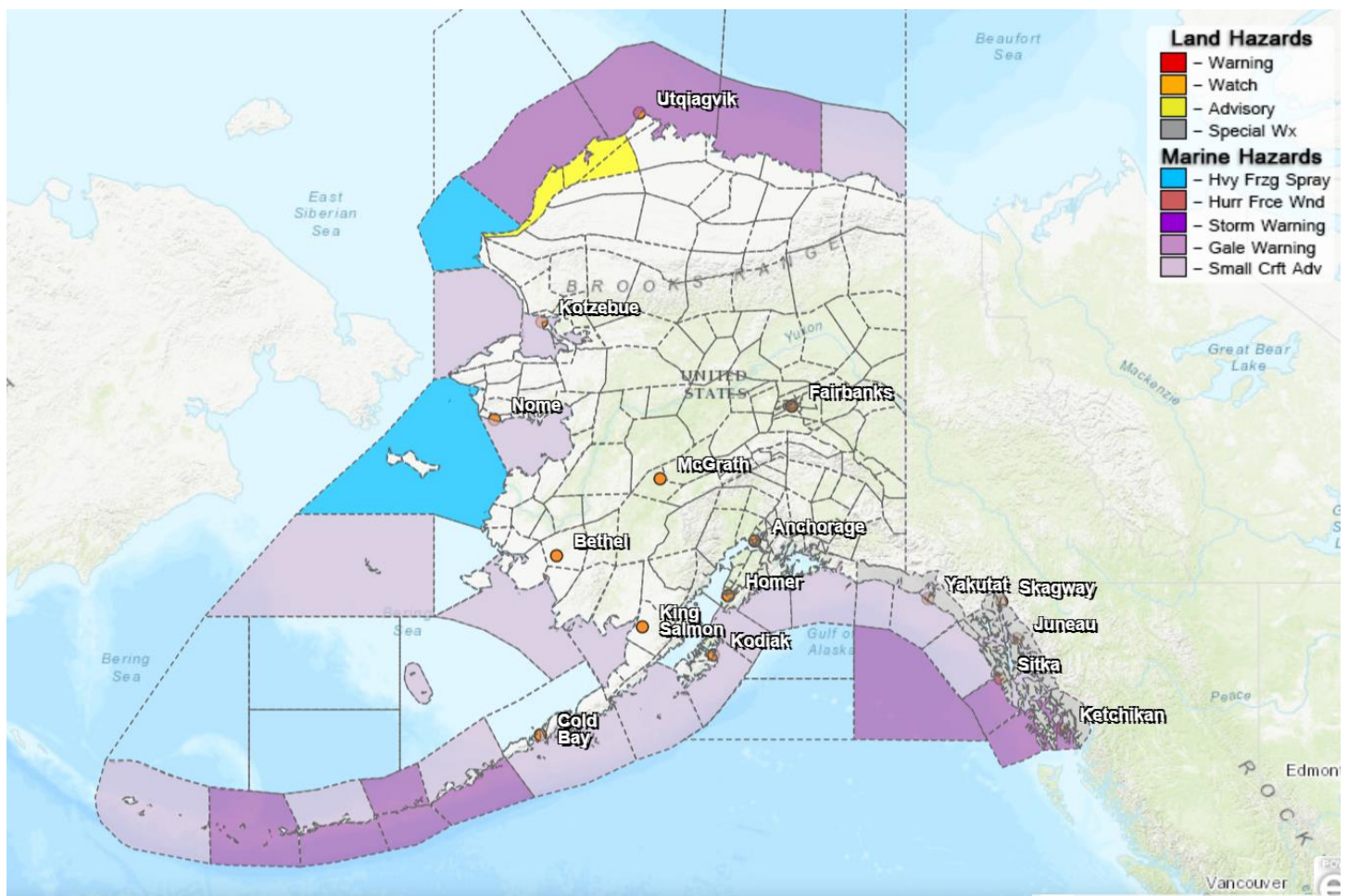
For Alaska Volcano updates, go to: <https://www.avo.alaska.edu/>

Air Quality Index (AQI) Advisories

For the most up to date Air Quality Index Advisories:

<http://dec.alaska.gov/Applications/Air/airtoolsweb/Home/Index>

Significant Weather:



Winter Weather Advisories are in effect for the Western Arctic Coast until noon today. Winds gusting as high as 40 mph will cause areas of blowing and drifting snow.

A Special Weather Statement has been issued for the following areas:

- Glacier Bay, Haines Borough, Lynn Canal, Juneau Borough, Tanya Inlet & the Klondike Highway from Thursday into Saturday. Strong, cold, northerly winds along with a cold air mass entrenched across the northern Inner Channels may produce a series of storms that will likely result in snow for much of the region at times.
- Eastern Baranof & Southern Admiralty Islands & the Inner Channels from Kupreanof to Etolin Island. A series of storms that could result in heavy rain Thursday into Saturday with possible sea-level snow Thursday into Thursday night for portions of the central Panhandle. Rainfall amounts could range from 2 to 3 inches Thursday afternoon into Saturday.
- Misty Fjords & the Southern Inner Channels. Heavy rain and potentially strong winds could impact the area Thursday into the early weekend. From Thursday afternoon through Saturday afternoon, rainfall amounts of 2 to 4 inches are expected. In addition, gusty winds will be likely at times from the southeast.

For more information and the most current weather, Watches / Warnings / Advisories go to:

<http://www.weather.gov/arh>

Avalanche Forecast:



- Areas near Cordova, Haines, Valdez, and along the Richardson Highway with Moderate risk.

Check the Avalanche Forecast Center closest to your area for the most up to date information on Avalanche potential. <https://alaskasnow.org/> or <https://www.weather.gov/afc/avalanche>

Spills of Oil and Hazardous Substances

The ADEC Spill Prevention and Response page is located at:

<http://dec.alaska.gov/spar/ppr/spill-information/response/>

Alaska Cyber Security Information

State Employees may sign up for cybersecurity notifications and alerts at

<https://oit.alaska.gov/Security>

The Next Situation Report: will be **16** December 2020. A significant change in the situation or the threat level will prompt an interim report.

This report is posted on the internet at <https://ready.alaska.gov/sitrep>. To register for email distribution, go to <http://list.state.ak.us/mailman/listinfo/dhsem.situation.report>. Direct questions regarding this report to the SEOC at 907-428-7100 or seoc@alaska.gov.